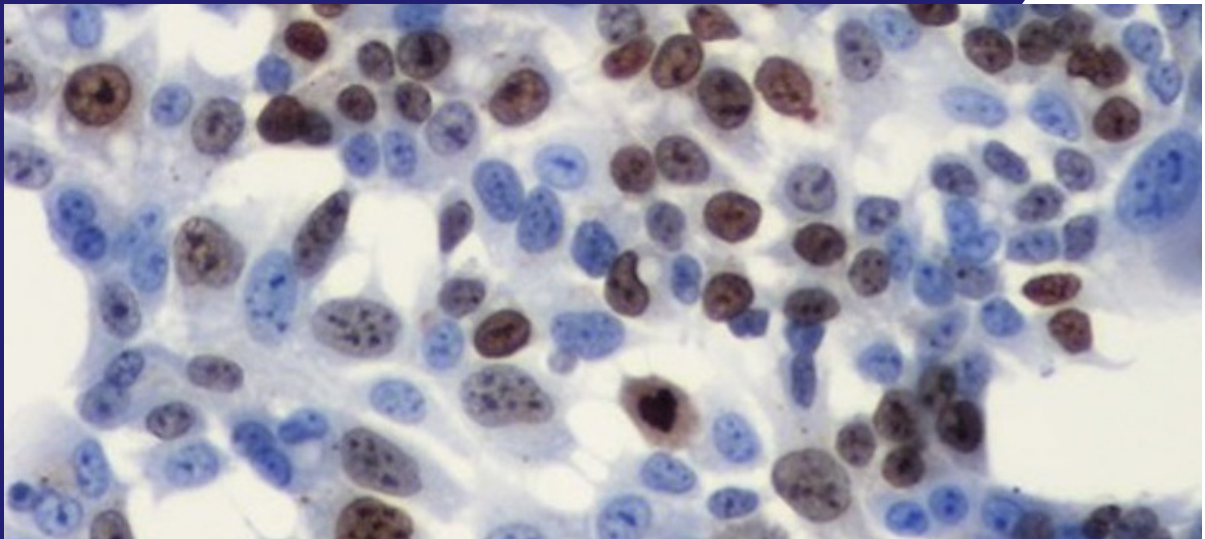


LIVER CANCER: Novel Clinical and Translational Advances

FRIDAY, OCTOBER 3, 2025



Icahn School of Medicine
at Mount Sinai
Davis Auditorium
1470 Madison Avenue
New York, NY 10029

Program Director

Josep M. Llovet, MD, PhD

Director, Mount Sinai Liver Cancer Program

Sponsored by

Mount Sinai Liver Center



**Mount
Sinai**

*The Tisch Cancer
Institute*

LIVER CANCER:

Novel Clinical and Translational Advances

FRIDAY, OCTOBER 3, 2025

PROGRAM

8:30 - 9:00am

Registration

9:00 - 9:15am

Welcome and Opening

Ramon Parsons, MD, PhD, Director, Tisch Cancer Institute, Ward-Coleman Chair in Cancer Research, Director, Mount Sinai Cancer, Mount Sinai Health System, Chair, Department of Oncological Sciences

Meena Bansal, MD, FAASLD, System Chief and Professor of Medicine, Division of Liver Diseases, Director, MASLD/MASH Center of Excellence, Icahn School of Medicine at Mount Sinai

9:15 - 9:40am

Achievements of Mount Sinai Liver Cancer Program 2005 - 2024

Josep M. Llovet, MD, PhD, Director Mount Sinai Liver Cancer Program, Professor of Medicine, Division of Liver Diseases, Tisch Cancer Institute

9:40 - 9:50am

Honorary distinction –Liver Cancer Program: Samuel Waxman, MD

Samuel Waxman, MD Professor Emeritus, Icahn School of Medicine at Mount Sinai. Founder and CEO, Samuel Waxman Cancer Research Foundation

9:50 - 10:20am

Hans Popper Lecture:

Introduction: Josep M. Llovet, MD, PhD, Director Mount Sinai Liver Cancer Program, Professor of Medicine, Division of Liver Diseases, Tisch Cancer Institute

Prospects for neo-adjuvant therapies in HCC

Mark Yarrow, MD, Associate Professor of Oncology, Sidney Kimmel Comprehensive Cancer Center, Johns Hopkins University School of Medicine

10:20 - 10:40am

Coffee Break

CLINICAL MANAGEMENT

10:40 - 12:00pm

MOLECULAR PATHOGENESIS AND DIAGNOSIS OF HCC

Chairman: Scott Friedman, MD, Fishberg Professor of Medicine, Dean for Collaborative Research and Partnerships, Director, Institute for Liver Research

10:40 - 11:00am

Molecular pathogenesis of HCC

Amaia Lujambio, PhD, Associate Professor of Oncological Sciences, Tisch Cancer Institute

11:00 - 11:20am

Immune populations in response/ resistance to therapies in HCC

Tom Marron, MD, PhD, Professor of Medicine, Hematology and Oncology, Professor of Immunology and Immunotherapy, Director, Early Phase Trials Unit, Tisch Cancer Institute

11:20 - 11:40pm

Molecular pathology of HCC

M. Isabel Fiel, MD, MS, FAASLD, Professor and Vice-Chair, Department of Pathology, Molecular and Cell-Based Medicine

11:40 - 12:00pm

Imaging for early detection of HCC

Bachir Taouli, MD, MHA, Professor of Radiology, Director of Body MRI and Cancer Imaging Program, Vice-chair of Translational Research, Department of Diagnostic, Molecular and Interventional Radiology, BioMedical Engineering and Imaging Institute

12:00 - 12:30pm

Lunch Break

12:30 – 1:30 pm

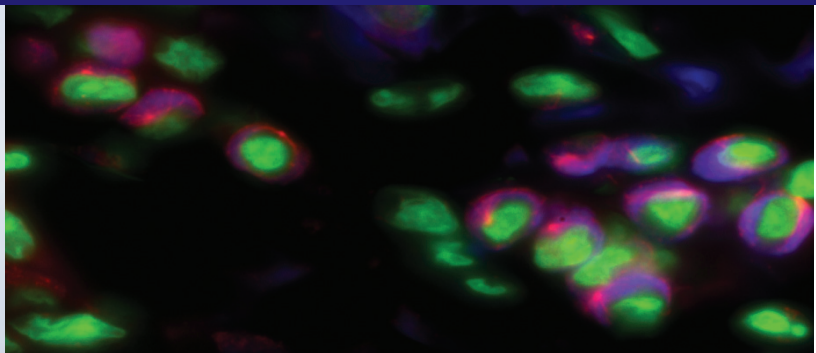
MANAGEMENT OF EARLY-INTERMEDIATE HCC

Myron Schwartz, MD, Clinical Director, Mount Sinai Liver Cancer Program, Director of Liver Surgery, Recanati/Miller Transplantation Institute

12:30 – 12:50pm

Surgery and adjuvant immunotherapy in HCC

Myron Schwartz, MD, Clinical Director, Mount Sinai Liver Cancer Program, Director of Liver Surgery, Recanati/Miller Transplantation Institute



12:50 – 1:10pm	Liver transplantation for HCC and management in the waiting list Parissa Tabrizian, MD, Mount Sinai Liver Cancer Program, Department of Liver Surgery,, Recanati/Miller Transplantation Institute
1:10-1:30pm	Role of TARE in the management of HCC Edward Kim, MD, Director of Interventional Oncology, Professor of Radiology and Surgery, Division of Vascular and Interventional Radiology, Mount Sinai Liver Cancer Program
1:30 – 2:30 pm	MANAGEMENT OF ADVANCED HCC and CCA Chairman: Josep M. Llovet, MD, PhD, Director Mount Sinai Liver Cancer Program, Professor of Medicine, Division of Liver Diseases, Tisch Cancer Institute
1:30 – 1:50pm	New phase III data on immune therapies for intermediate /advanced HCC Josep M. Llovet, MD, PhD, Director Mount Sinai Liver Cancer Program, Professor of Medicine, Division of Liver Diseases, Tisch Cancer Institute
1:50-2:10pm	SBRT in advanced HCC: Is there any role? Michael Buckstein, MD, PhD, Associate Professor and Vice-Chair for Education, Residency Program Director, Department of Radiation Oncology
2:10-2:30pm	Novel RCT and flowchart of management of CCA Dan Feng, MD, Mount Sinai Liver Cancer Program, Hematology and Oncology Department, Tisch Cancer Institute
2:30 – 2:50pm	Coffee Break
BASIC /TRANSLATIONAL SCIENCE	
2:50 - 3:40pm	FLASH COMMUNICATIONS FROM YOUNG INVESTIGATORS Chairman: Ernesto Guccione, PhD, Professor of Oncological Sciences, Director of Mount Sinai Center for OncoGenomics and Innovative Therapeutics (COGIT)
2:50 - 2:55pm	Young Investigator- Group of Daniela Sia
2:55 - 3:00pm	Young Investigator- Group of Josep M. Llovet
3:00 - 3:05pm	Young Investigator- Group of Scott Friedman
3:05 - 3:10pm	Young Investigator- Group of Alice Kamphorst/Miriam Merad
3:10 - 3:15pm	Young Investigator- Group of Ernesto Guccione
3:15 - 3:20pm	Young Investigator- Group of Amaia Lujambio
3:20 - 3:40pm	Discussion
3:40- 4:20pm	PATHOGENESIS AND NOVEL TARGETS FOR LIVER CANCER Chairman: Augusto Villanueva, MD, PhD, Medical Director, Liver Cancer Program, Perlmutter Cancer Center, NYU Langone
3:40 - 4:00pm	Cholangiocarcinoma: What is new? Daniela Sia, PhD, Associate Professor, Mount Sinai Liver Cancer Program, Division of Liver Diseases, Tisch Cancer Institute
4:00 - 4:20pm	Hepatic stellate cells as therapeutic targets in NASH and HCC Shuang (Sammi) Wang, PhD, Assistant Professor of Medicine, Division of Liver Diseases
4:20 – 4:30pm	Closing remarks Josep M. Llovet, MD, PhD, Director Mount Sinai Liver Cancer Program, Professor of Medicine, Division of Liver Diseases, Tisch Cancer Institute

PROGRAM DIRECTOR

JOSEP M. LLOVET, MD, PHD

Co-Director Mount Sinai Liver Cancer Program, Division of Liver Diseases, Tisch Cancer Institute

PROGRAM CHAIRS

SCOTT FRIEDMAN, MD

Fishberg Professor of Medicine, Dean for Collaborative Research and Partnerships, Director, Institute for Liver Research

MYRON SCHWARTZ, MD

Clinical Director, Mount Sinai Liver Cancer Program, Director of Liver Surgery, Recanati/Miller Transplantation Institute

GUEST FACULTY

AMAIA LUJAMBIO, PHD

Scientific Director, Mark Foundation for Cancer Research

AUGUSTO VILLANUEVA, MD, PHD

Medical Director, Liver Cancer Program, Perlmutter Cancer Center, NYU Langone

MARK YARCHOAN, MD

Department of Oncology, Sidney Kimmel Cancer Center, Johns Hopkins University School of Medicine

HOST FACULTY

MEENA BANSAL, MD, FAASLD

System Chief and Professor of Medicine, Division of Liver Diseases, Director, MASLD/MASH Center of Excellence, Icahn School of Medicine at Mount Sinai

MICHAEL BUCKSTEIN, MD, PHD

Associate Professor and Vice-Chair for Education, Residency Program Director, Department of Radiation Oncology

DAN FENG, MD

Assistant Professor of Medicine, Mount Sinai Liver Cancer Program, Hematology and Oncology Department, Tisch Cancer Institute

M. ISABEL FIEL, MD, MS, FAASLD

Professor and Vice-Chair, Department of Pathology, Molecular and Cell-Based Medicine

ERNESTO GUCCIONE, PHD

Professor of Oncological Sciences, Director of Mount Sinai Center for OncoGenomics and Innovative Therapeutics (COGIT)

EDWARD KIM, MD

Director of Interventional Oncology, Professor of Radiology and Surgery, Division of Vascular and Interventional Radiology, Mount Sinai Liver Cancer Program

TOM MARRON, MD, PHD

Professor of Medicine, Hematology and Oncology, Professor of Immunology and Immunotherapy, Director, Early Phase Trials Unit, Tisch Cancer Institute

RAMON PARSONS, MD, PHD

Director, Tisch Cancer Institute, Ward-Coleman Chair in Cancer Research, Director, Mount Sinai Cancer, Mount Sinai Health System Chair, Department of Oncological Sciences

DANIELA SIA, PHD

Associate Professor, Mount Sinai Liver Cancer Program, Division of Liver Diseases, Tisch Cancer Institute

PARISSA TABRIZIAN, MD

Mount Sinai Liver Cancer Program, Department of Liver Surgery, Recanati/Miller Transplantation Institute

BACHIR TAOULI, MD, MHA

Professor of Radiology, Director of Body MRI and Cancer Imaging Program, Vice-chair of Translational Research, Department of Diagnostic, Molecular and Interventional Radiology, BioMedical Engineering and Imaging Institute

SHUANG (SAMMI) WANG, PHD

Assistant Professor of Medicine, Division of Liver Diseases

SAMUEL WAXMAN, MD

Professor Emeritus, Icahn School of Medicine at Mount Sinai, Founder and CEO, Samuel Waxman Cancer Research Foundation

Target Audience

Hepatologists and Gastroenterologist, Oncologists, Surgeons, Radiologist, Pathologists and Basic Scientists interested in liver cancer from the New York Area and beyond.

Accreditation Statement

The Icahn School of Medicine at Mount Sinai (ISMMS) is accredited by the Accreditation Council for Continuing Medical Education (ACCME) to provide continuing medical education for physicians.

Credit Designation

The Icahn School of Medicine at Mount Sinai designated this internet live activity for a maximum of 7.0 *AMA PRA Category 1* Credit(s). Physicians should only claim credit commensurate with the extent of their participation in the activity.

Activity Description

This conference will assemble multidisciplinary experts on chronic liver diseases, hepatocellular carcinoma (HCC) and cholangiocarcinoma (CCA) from the Mount Sinai Liver Cancer Program and one outstanding invited lecturer. The meeting aims to provide a summary of the state-of-the-art knowledge of the novel advancements reported in 2024 on the pathogenesis and clinical management of liver cancer, including the research conducted in Mount Sinai. Results of new RCT reported this year that will change the clinical practice will be reviewed.

Activity Learning Objectives

- Define the molecular pathogenesis and targeted therapies in liver cancer.
- Discuss the role of surgical and loco-regional therapies for liver cancer.
- Update the current AASLD proposed standard of management of advanced HCC with new immune combination therapies.
- Describe cutting-edge research in liver cancer, particularly regarding new insights in the pathogenesis of the disease and new molecular and immune therapies, conducted at the Mount Sinai Liver Cancer Program-2024-25

Special Needs

The Icahn School of Medicine at Mount Sinai is in full compliance with provisions of the Americans with Disabilities Act (ADA) and is accessible for individuals with special needs. If you would like to attend this conference and require any special needs or accommodations please contact the Page and William Black Post-Graduate School of Medicine at cme@mssm.edu.

Faculty Disclosure Policy

It is the policy of the Icahn School of Medicine at Mount Sinai to ensure objectivity, balance, independence, transparency, and scientific rigor in all accredited CE educational activities. All individuals in control of content of an activity accredited by ISMMS are expected to disclose all their financial relationships with ineligible companies existing within the prior 24 months. Relevant financial relationships are mitigated and disclosed to learners before the activity takes place. All relevant financial relationships have been mitigated.

Registration

<https://mssm.cloud-cme.com/20thLiverCancer>

Registration Fees

\$25 – MSHS Physicians and Allied Health Professionals
\$50 – Physicians and Allied Health Professionals
\$100 – Industry participants

Icahn School of Medicine at Mount Sinai
The Page & William Black Post-Graduate School
One Gustave L. Levy Place, Box 1193
New York, NY 10029

MOUNT SINAI LIVER
CANCER PROGRAM **20TH ANNIVERSARY**

LIVER CANCER:
Novel Clinical and Translational Advances
FRIDAY, OCTOBER 3, 2025



Tisch Cancer Institute
Icahn School of Medicine at Mount Sinai

Register Now